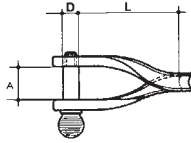


## ŠKOPAC TANKI UVIJENI DUGI INOX AISI 316

618

FLAT AND TWISTED SHACKLES STAINLESS STEEL AISI 316

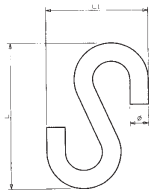


Šifra artikla	Promjer D mm	P mm	L mm	S mm	Nosivost kg
618004	4	11	22	5	200
618005	5	12	37	6	350

## S KUKA

619

FLAT AND TWISTED SHACKLES STAINLESS STEEL AISI 316

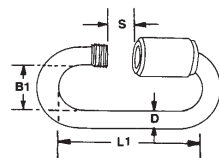


Šifra artikla	Promjer D mm	L mm	L1 mm
619004	4	38,5	21,5
619005	5	46	26,5
619006	6	52,5	31,5
619007	7	61	36
619008	8	64	44

## BRZA SPOJNICA LANCA INOX AISI 316

620

QUICK LINKS STAINLESS STEEL AISI 316

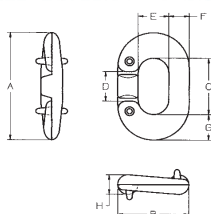


Šifra artikla	D mm	L1 mm	B1 mm	S mm
6200035	3,5	29	10	4,5
620004	4	32	12	5,5
620005	5	39	13	6,5
620006	6	45	14	7,5
620007	7	52	16	8,5
620008	8	58	18	9,5
620009	9	62	20	11
620010	10	69	22	12
620012	12	81	24	14,5

## SPOJNICA LANACA KALIBRIRANA INOX AISI 316

621

REPLACEMENT LINK FOR CALIBRATED CHAIN STAINLESS STEEL AISI 316



Šifra artikla	D mm	A mm	B mm	C mm	D mm	E mm	F mm	G mm	H mm	Prekidno opterećenje kg
621006	6	38	26	22	10	10	8	8	7	2100
621008	8	45	30	25	13	12	9	10	9	3000
621010	10	54	35	28	14	13	11	13	11	4600

## PLASTIČNE OZNAKE ZA LANAC

622

PLASTIC CHAIN LABELS

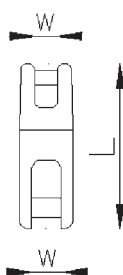


Šifra artikla	Za lanac mm	Pakiranje kom.
622006	6	50
622008	8	50
622010	10	50
622013	13	50

## SPOJNICA OKRETNNA SIDRO-LANAC INOX AISI 316

623

POWER ANCHOR CHAIN CONNECTION STAINLESS STEEL AISI 316

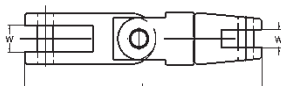


Šifra artikla	Promjer lanca mm	L mm	W mm	Prekidno opterećenje kg
6230608	Ø6-Ø8	100	16	4250
6231012	Ø10-Ø12	122	19	6750

## SPOJNICA OKRETNNA ZGLOBNA SIDRO-LANAC INOX AISI 316

624

POWER ANCHOR CONNECTOR – DOUBLE SWIVEL STAINLESS STEEL AISI 316

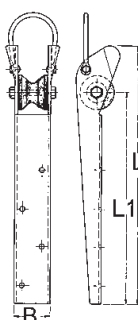


Šifra artikla	Promjer lanca mm	L mm	W mm	Prekidno opterećenje kg
6240608	Ø6-Ø8	120	16	4250
6241012	Ø10-Ø12	170	19	6750

## PRAMČANA VODILICA INOX AISI 316

625

BOW ROLLER STAINLESS STEEL AISI 316



Šifra artikla	L mm	L1 mm	W mm
625500	500	410	70